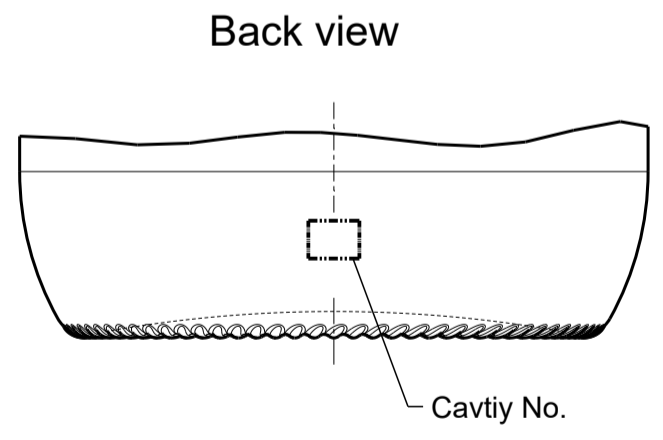
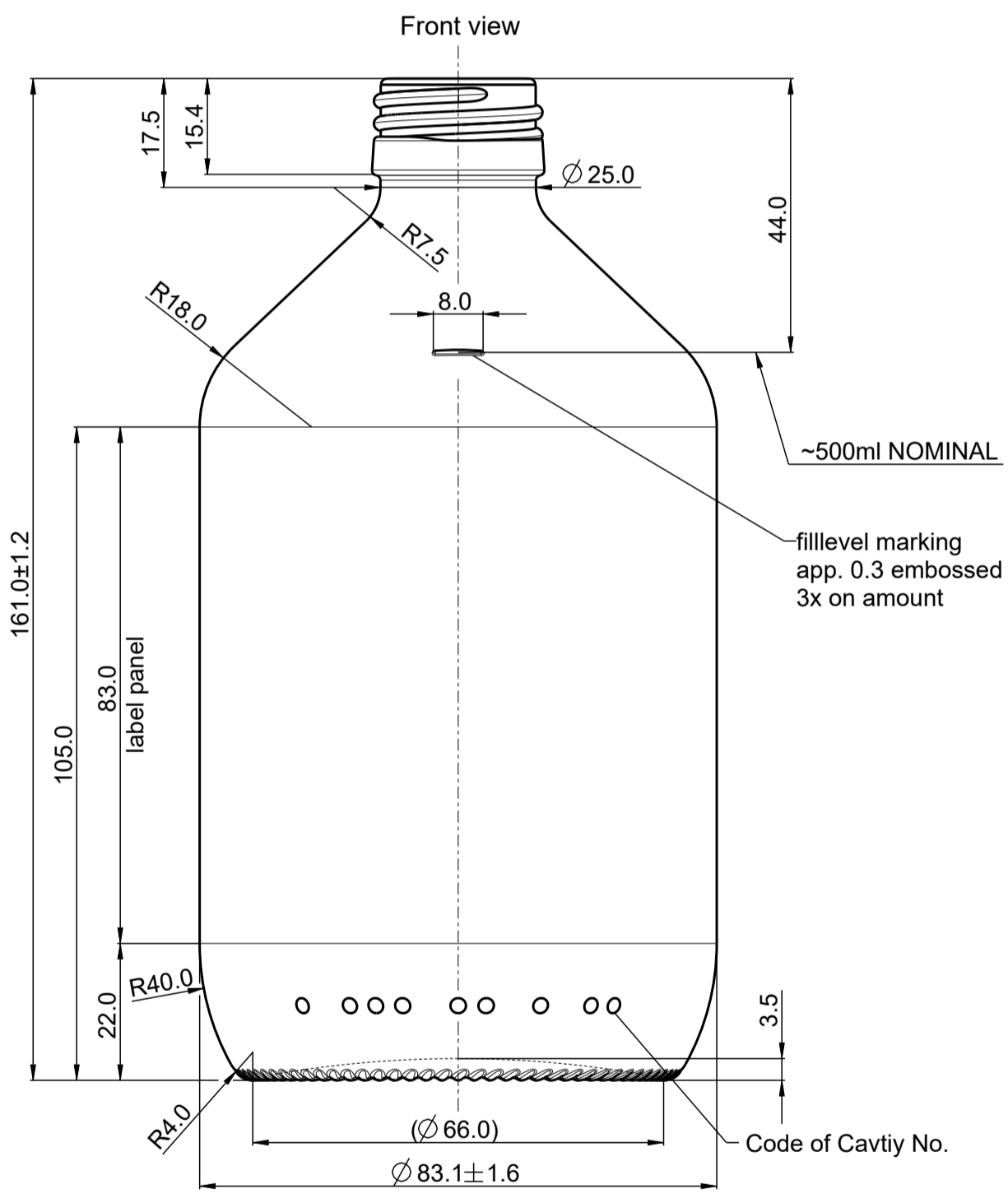
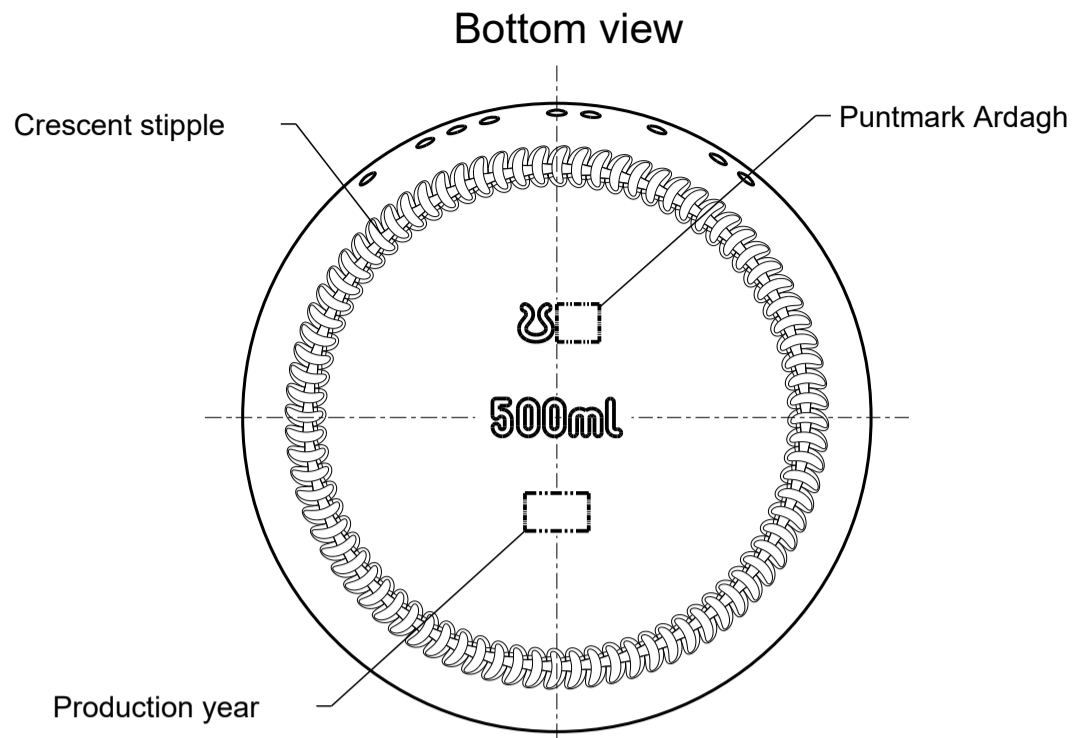



COLOUR	SAP SPEAKING NO	SAP MATERIAL NO
Standard amber	20-00717 -0	30000717



0.5 STIPPLE HEIGHT IS INCLUDED IN ALL DIMENSIONS FROM THE BASE

NOMINAL CAPACITY	500.0 ml	SPECIFICATION AGREEMENTS ARE BASED ON TOLERANCED DIMENSIONS ONLY DO NOT SCALE DRAWING COPYRIGHT RESERVED, NOT TO BE COPIED IN WHOLE OR PART WITHOUT WRITTEN PERMISSION FROM ARDAGH GLASS LTD. ALL DIMENSIONS ARE IN MILLIMETERS Document supervised by SAP, cProject and Windchill PDMLink systems	Product & Mould Design		ArdaghGroup 					
BRIMFUL CAPACITY	555.0 ml ± 10.0 ml		Glass - Europe							
VACUITY	55.0 ml (11.0 %)		DESIGNER	LingemannS	SHEET	1 / 1				
FINISH DESCRIPTION	PP 28S Special		DATE	10.12.2020	SCALE	1:1 (A3)				
FINISH NUMBER	AF02005		CUSTOMER	Standard	PROJECT	200076				
FINISH NORM	DIN6094-7:1995-02		PRODUCT NAME							
MINIMUM THROUGH BORE	16.0 mm		STD MEDIZIN HY 500							
WEIGHT NOMINAL	266 g		SAP MATERIAL NAME							
USAGE	NON RETURNABLE		STD MEDIZIN HY 500 C20 28PP							
CARBONATION	-		B	D23812B replaces D18781B in MyArdagh database	BarkerC	-	10.12.2020	OLD NUMBER	D18781 B	
TILT ANGLE	28.3°	A	First drawing / Changed finish spec	LingemannS	-	10.12.2020	DRAWING NO.	D23812 B	PRODUCT CODE	00717 -0
		REVISION		DSG	CHK	DATE				